

DECK LAYOUTS

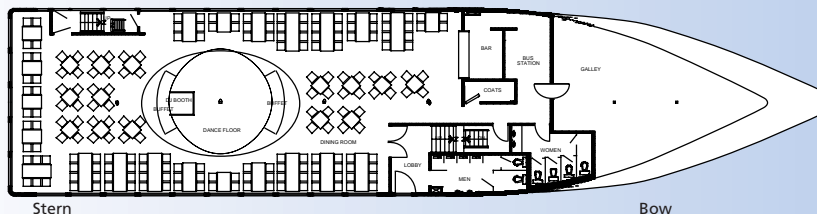
Mystic Blue Facts

Mystic Blue Cruises is the newest dinner cruise ship at Navy Pier. A 600-passenger vessel built specifically for cruising the Chicago skyline, Mystic Blue Cruises offers three enclosed decks plus a relaxing open-air deck. Newly remodeled, sleek, silvery-blue interiors. And unbeatable views from every table.



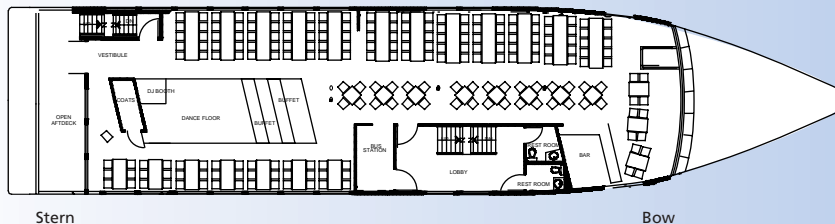
Horizon Deck

Lake Level Deck Seating Capacity: 200
Passenger Dining Area: 3000 Sq. Ft.
Bar: 1 Main
Galley: 700 Sq. Ft.
Dance Floor Area: 314 sq. Ft



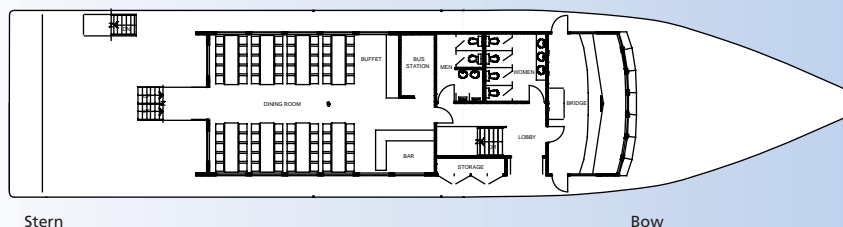
Escapade Deck

Middle Deck Seating Capacity: 208
Passenger Dining Area: 3175 Sq. Ft.
Bar: 1 Main
Dance Floor Area: 220 sq. Ft.
Passengers board and disembark on the stern of the Escapade Deck.
This deck is handicapped-accessible.



Vista Deck

Top Deck Indoor Seating Capacity: 80
Outdoor Seating Capacity: 30
Passenger Dining Area: 950 Sq. Ft.
Bar: 1 Main



Skyline Deck

Outdoor Seating Capacity: 145
Observation Deck Area: 1000 Sq. Ft.
The Skyline Deck is equipped with an outdoor sound system.
(Smoking is permitted on outside decks only.)

Mystic Blue | Cruises™

MysticBlueCruises.com • 312.396.2220